

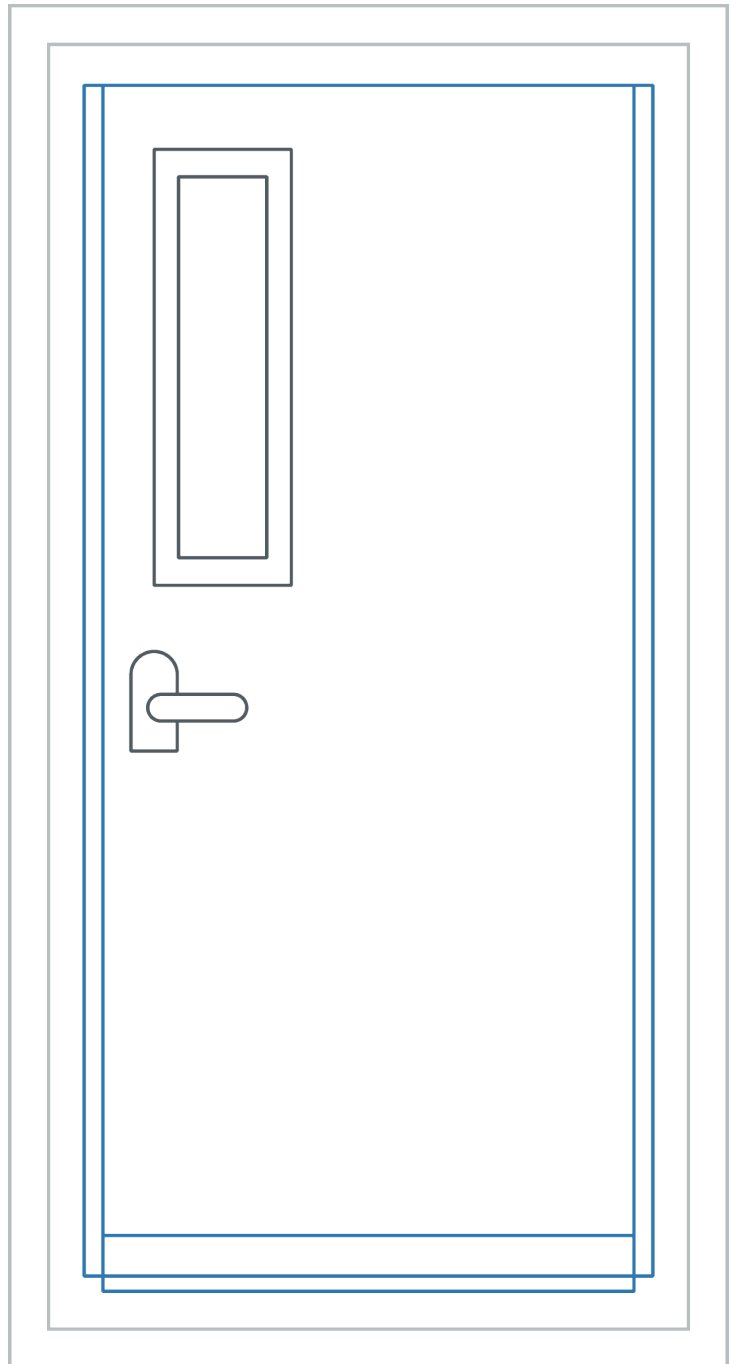
SOUND LOCK SOUNDPROOF DOOR INSTALL GUIDE

TABLE OF CONTENTS

- 2** Materials in Your Kit
- 3** Unpacking Instructions
- 4-7** Installing the Door
- 8** Sealing the Door (Part 1)
- 9** Trim Installation
- 10** Sealing the Door (Part 2)
- 11** Handleset Installation
- 12** Jamb Seal Installation
- 13** Door Seal Adjustment and Cap Kit Installation

DELIVERY INSTRUCTIONS

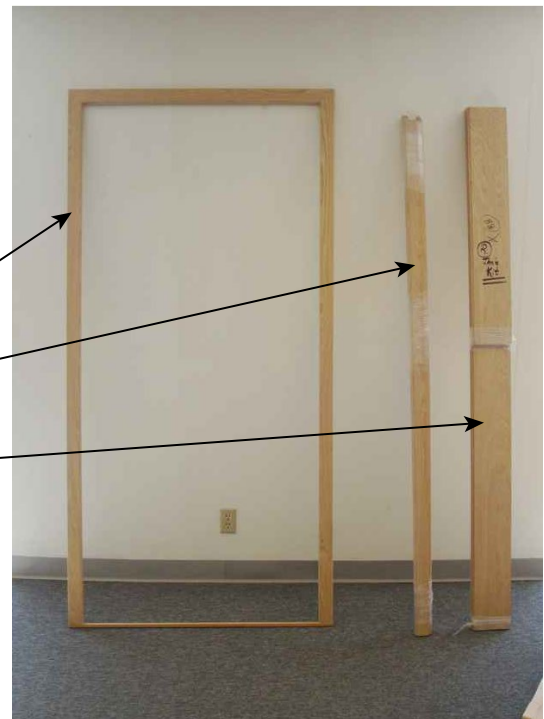
Upon delivery and before signing, make sure that the crate and packaging shows no sign of damage. If there is damage, take pictures and have the driver sign for the damage. Contact us immediately at **1-800-679-8511**.



SOUND LOCK SOUNDPROOF DOOR INSTALL GUIDE

MATERIALS INCLUDED IN SKID

- A - Casing
- B - Seal Cover Kit
- C - Jamb Extension Set (if ordered)
- D - Door & Jamb
- E - Sound Lock Door Install Kit & Hardware



SOUND LOCK SOUNDPROOF DOOR INSTALL GUIDE

UNPACKING INSTRUCTIONS

1

Remove (4) screws and temporary bottom plate at bottom of door.



2

Verify door swing and stand door against wall on appropriate side. Verify rough opening width and height.



Floor Preparation: Ensure that the floor under the door slab is flat and level. You may install a flat, level, and smooth threshold if desired. If the existing floor is not flat, level, and smooth, the bottom door seal will not perform properly. DO NOT raise the hinge side of the jamb off of the floor. The factory undercut of the door is set to the proper height.

SOUND LOCK SOUNDPROOF DOOR INSTALL GUIDE

INSTALLING THE DOOR

1

Remove any remaining packaging and place the door such that the back side of door trim is tight against face of wall. Once the door is in place, measure from the top of door to the center of each hinge and record the distances.



2

Transpose the measurements to the opposite side of the door and mark each location.



3

Install shims directly behind hinges at these locations and tack into place with pin nails.

Touch up any nail holes with a wood filler that matches the finish.



SOUND LOCK SOUNDPROOF DOOR INSTALL GUIDE

INSTALLING THE DOOR (CONT.)

4

Remove (2) screws per hinge closest to door stop. Pre-drill and install heavy duty hinge screws provided into two hinge holes as shown. It is very important to make sure this side of door is plumb, adjusting with shims as necessary as you move from hinge to hinge. If the screws do not contact solid wood for required holding power it may be necessary to remove the door seal and install screws beneath the seal on the doorstop and reinstall it.



If seal removal is needed to make contact into solid wood framing: to remove the door seal, remove the screws going through the seal into the wood doorstops. Install long screws through the wood doorstops. Be sure to countersink the long screws so that the door seals rest flat on the wood doorstops. Reinstall the door seal with the screws previously removed from the seal.

5

Shim the reveal on latch side of door between the door and jamb to 1/8".



SOUND LOCK SOUNDPROOF DOOR INSTALL GUIDE

INSTALLING THE DOOR (CONT.)

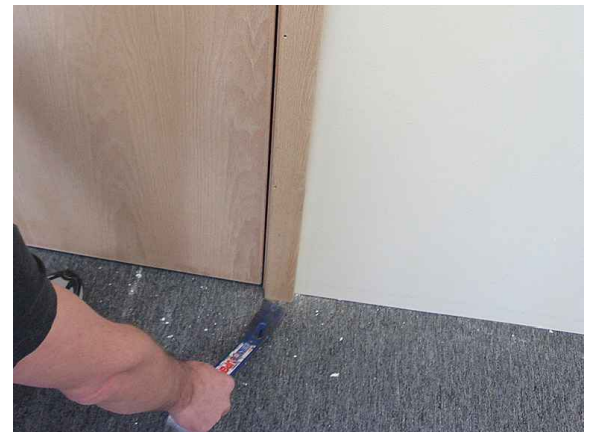
6

Scribe a horizontal line from center of latch in door to centerline of door strike respectively.



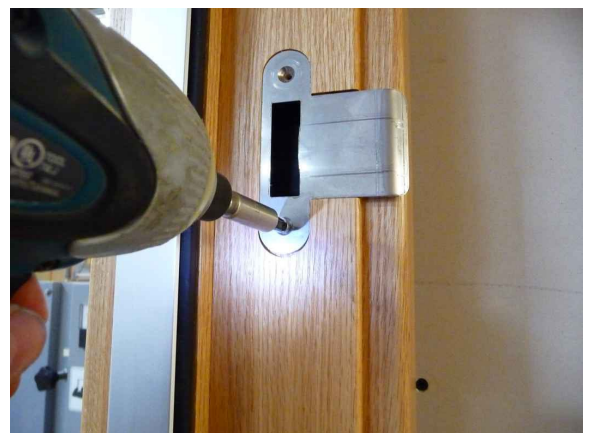
7

Raise or lower the jamb to align. Install shims and nail or screw into jamb. Touch up any nail holes with a wood filler that matches the finish.



8

Replace strike side hardware with long screws provided. If the screws do not contact solid wood for required holding power, it may be necessary to remove the door seal and install screws beneath the seal and reinstall it. (Refer to install tip in step 4).

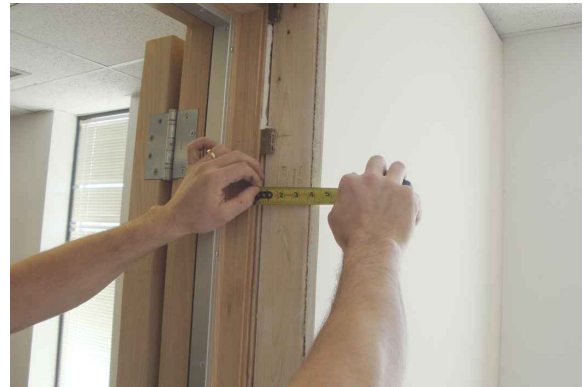


SOUND LOCK SOUNDPROOF DOOR INSTALL GUIDE

INSTALLING THE DOOR (CONT.)

9

Measure distance from standard doorjamb to edge of finished wall. Cut down extension jamb kit accordingly, measuring on the face of the extension jamb, not from the top of the tongue (as this is inserted into the groove on the door jamb and does not contribute to the finished jamb width)



10

Install wood glue into the groove in the door jamb and insert the extension jamb. Nail into place. Touch up any nail holes with a wood filler that matches the finish.



SOUND LOCK SOUNDPROOF DOOR INSTALL GUIDE

SEALING THE DOOR (PART 1)

- 1 Remove excess shim with a wood chisel.



- 2 Install sealant backer into space between door-jamb and rough opening a minimum of 1" deep.



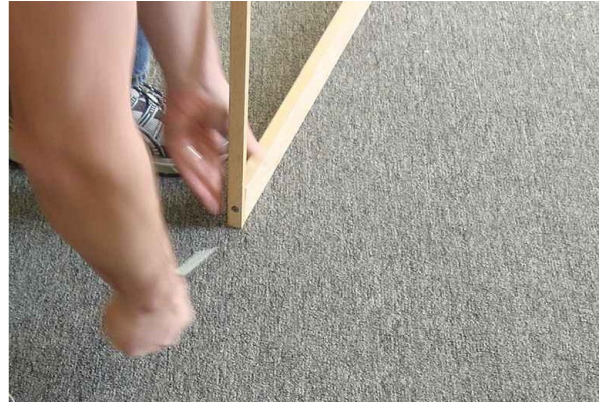
- 3 Neatly apply acoustical sealant.



SOUND LOCK SOUNDPROOF DOOR INSTALL GUIDE

TRIM INSTALLATION

- 1 Remove temporary support from bottom of pre-assembled trim casing. Center on door opening and pin nail into place to hold.



- 2 Fasten to jamb with trim screws provided.



- 3 Tack outside of trim into place with pin nails. Touch up any nail holes with a wood filler that matches the finish.



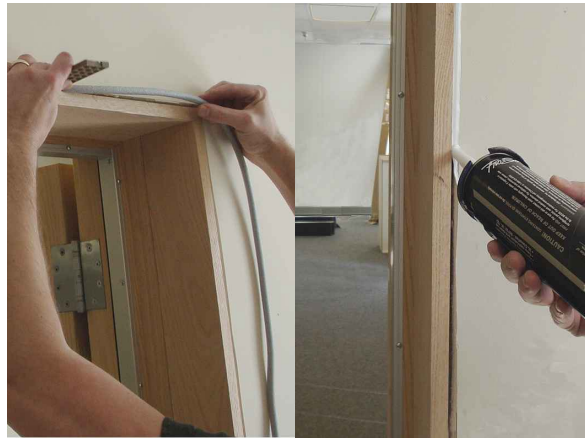
SOUND LOCK SOUNDPROOF DOOR INSTALL GUIDE

SEALING THE DOOR (PART 2)

- 1 Carefully remove the factory installed trim from the slab side of the door.



- 2 Repeat steps 2 and 3 from Sealing the Door (Part 1) for the slab side of the door.



- 3 Replace trim by following steps 2 and 3 from the Trim Installation section.

Touch-up any nail holes with a wood filler that matches the finish.



SOUND LOCK SOUNDPROOF DOOR INSTALL GUIDE

HANDLESET INSTALLATION

- 1 Install handleset per instructions included with handleset. Our handleset box contains two sets of screws and two tailpieces. The shorter tailpiece and screws are for a standard door and won't be used. The longer tailpiece and screws are for the Sound Lock Soundproof Door.



If the standard GU Hardware is selected, it is a universal hardware system and can be used for a right or left-handed door.

Please refer to your GU hardware installation instructions to change handing of door hardware.



PASSAGE ONLY
(Passive)



THUMB-TURN DEADBOLT
(Semi-Active)



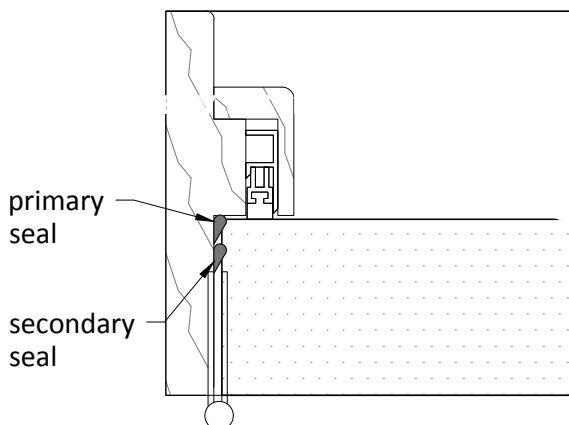
KEYED DEADBOLT
(Active)

SOUND LOCK SOUNDPROOF DOOR INSTALL GUIDE

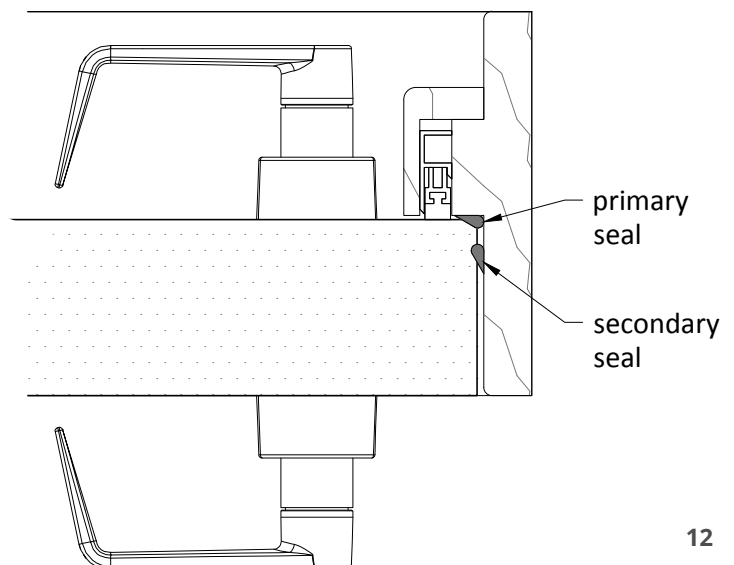
JAMB SEAL INSTALLATION

- 1 Begin by installing the secondary seal on the strike side of the door. Take note of the reference drawings below for details on seal orientation. Rough cut a length of seal approximately 2" longer than needed to run the entire distance from the top to the bottom of the door. Starting at the top of the door jamb remove about 18" or so of the protective facing from the self-stick adhesive and butt the end of the seal against the top of the door jamb. Remove more protective facing while you work your way down keeping the seal from obstructing the strike plate openings. Trim flush at the bottom.
- 2 Next install the secondary seal at the top of door jamb as described previously. Align parallel with the door jamb and trim flush with the hinge jamb. Repeat this process by butting the hinge jamb seal into the top of the door jamb, working your way down and trimming the seal flush at the bottom.
- 3 The primary seal is to be installed in the same order as the secondary seal (strike jamb, top of door jamb, hinge jamb). Note that the strike jamb and top of jamb seals are to attach to the door stop while the hinge jamb seal is to attach to the hinge jamb (see below).

HINGE JAMB SEAL ORIENTATION



STRIKE JAMB SEAL ORIENTATION (similar orientation at top of jamb)

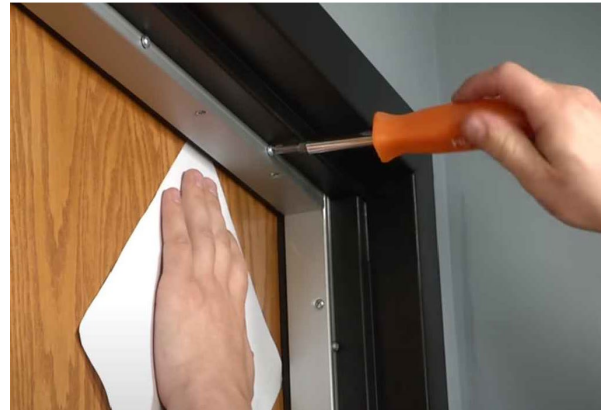


SOUND LOCK SOUNDPROOF DOOR INSTALL GUIDE

DOOR SEAL ADJUSTMENT AND CAP KIT INSTALLATION

1

Adjust the door seal such that the neoprene is tight (but not too tight!) to the door. To do this, slide a piece of paper into the 1/16" gap between the neoprene and the door. Twist the pan head screws on the door seal using counter-clockwise quarter turns with a screwdriver until the paper is held up by the neoprene seal. Do not overtighten - overtightening will lead to loss of NRC. Do not force the screw to turn clockwise as that can cause it to snap off.



2

While door is open back out adjustment screw on hinge side one half-turn at a time. Close the door and observe light passing under the door. Bottom seal will contact floor at hinge side first. Continue to adjust slowly, moving to one quarter-turn at a time until seal only just blocks any light under the door. The bottom seal may take a few weeks to a month to adjust properly, as the gasket adjusts and ages. When it is new, it is sticky and will catch and rip if it is adjusted too tightly or too soon.



3

To install cap kit, simply remove contact paper from the factory installed adhesive locations. Make sure aluminum door seal has a clean surface to adhere to, and place the cap over the seal as shown. Apply firm and even pressure for 5 seconds to activate adhesive. Start with the top jamb, and then adhere the two side caps, again applying firm and even pressure for 5 seconds.



YOU'RE DONE!
HIGH-FIVE WHOEVER IS CLOSEST TO YOU.

