

Mela Mute™ Acoustic Foam

Wave Cloud

SPEC SHEET

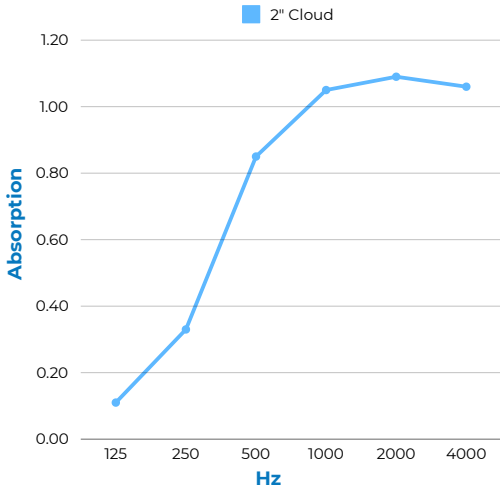
- ✓ Easy to Hang
- ✓ Super Lightweight
- ✓ Controls Echo & Reverb
- ✓ Class A Fire Rated
- ✓ Decorative & Paintable
- ✓ Non-Fibrous & No Itch



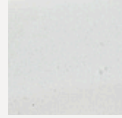
Material:	Open Cell Melamine Foam
Patterns:	Wave, Porous, Semi-Rigid, Non-Fibrous
Features:	Easy to Hang, Absorbs Echo & Reverb, Decorative, Lightweight, Class A Fire Rated, Paintable, Non-Fibrous, Non-Toxic
Application:	Offices, Auditoriums, Theaters, Conference Rooms, Restaurants, Music Rooms, Universities, Schools, Houses of Worship, Multi-Purpose Rooms, Government & Municipal Facilities
Thickness:	2"
Size:	24" x 48"
Weight	1.40lbs
Color:	White, Light Grey, Dark Grey (call to request)
Temperature Rating:	-40°F to 350°F
Flammability:	ASTM E84, Class A Flame Spread: 10 Smoke Developed: 50
Installation:	Light Duty Chain (by other) and Corkscrews (provided)

Noise Reduction Coefficient

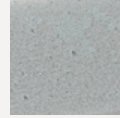
Size	Test Mount	125 Hz	250 Hz	500 Hz	1000 Hz	2000 Hz	4000 Hz	NRC
2" Mela Mute™ Wave Cloud	B-Mount	0.11	0.33	0.85	1.05	1.09	1.06	0.85



Color Options



White



Light Grey



Dark Grey