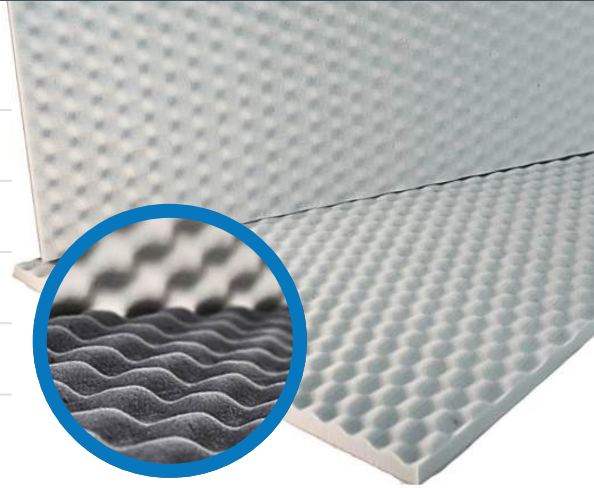


Mela Mute™ Acoustic Foam

Anechoic Wedge

SPEC SHEET

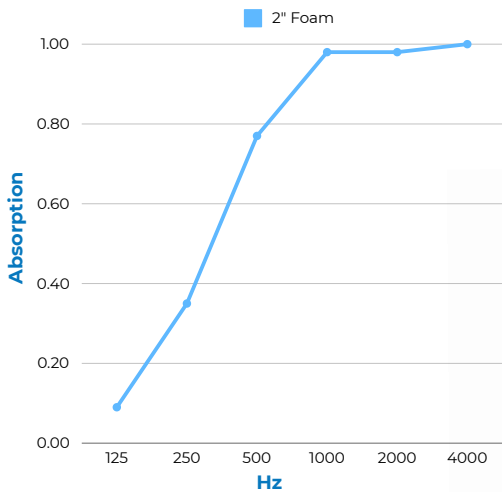
- ✓ Controls Echo & Reverb
- ✓ Super Lightweight
- ✓ Easy to Install
- ✓ Class A Fire Rated
- ✓ Decorative & Paintable
- ✓ Non-Fibrous & No Itch



Material:	Open Cell Melamine Foam
Patterns:	Anechoic Wedges, Porous, Semi-Rigid, Non-Fibrous
Features:	Easy to Install, Absorbs Echo & Reverb, Decorative, Lightweight, Class A Fire Rated, Paintable, Non-Fibrous, Non-Toxic
Application:	Testing Chambers, Recording Studios, Broadcast Studios, Offices, Conference Rooms, Restaurants, Music Rooms, Universities, Hospitals, Schools, Houses of Worship, Theaters, Multi-Purpose Rooms, Government & Municipal Facilities
Thickness:	1" & 2"
Size:	24" x 48"
Weight	1": 0.50lbs 2": 0.95lbs
Color:	White, Light Grey, Dark Grey
Temperature Rating:	-40°F to 350°F
Flammability:	ASTM E84, Class A Flame Spread: 10 Smoke Developed: 50
Installation:	P329 Spray Adhesive or Construction Adhesive

Noise Reduction Coefficient

Size	Test Mount	125 Hz	250 Hz	500 Hz	1000 Hz	2000 Hz	4000 Hz	NRC
2" Mela Mute™ Anechoic Wedge	A-Mount	0.09	0.35	0.77	0.98	0.98	1.00	0.75



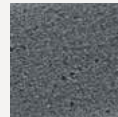
Color Options



White



Light Grey



Dark Grey

